

# LYMPSTONE TENNIS CLUB

(affiliated to the Lawn Tennis Association)

<b>Chair:</b> Jill Dixon Treetops Grange Close Lympstone EX8 5LD Tel: 01395 224774	<b>Treasurer:</b> Andrew Lorenc Millbrook Cottage Longbrook Lane Lympstone EX8 5BE Tel: 01395 263068	<b>Secretary:</b> Liz Griffiths Northcote Clay Lane Lympstone EX8 5LD Tel: 01395 227536
---	---	--

## ANNUAL GENERAL MEETING

Tuesday 9th March 2021

Teams Conference Call, 7.30pm

### Minutes

Those present: Jill Dixon, Liz Griffiths, Sarah Forde, Will Harvey, Paul Harradine, Rob Hilton, Téan Hurley, Sue Norman, Mary Turner

Apologies: Chris Bones, John & Margaret Bennett, Corinne Gimber, Julie Rockey

### Chairman's Welcome

Rob welcomed everyone to the meeting. The minutes of the 2020 AGM were agreed and duly signed as a true record of the 2020 AGM.

There were no matters arising.

### Chairman's Report

Attached as appendix.

### Treasurer's Report & Accounts

Attached as appendix.

It was agreed that the new Committee would look at building up new membership amongst Junior members.

### Proposed Subscriptions for 2019

Agreed there will be no increase and that they will be reduced proportionally to reflect the loss of play due to the closure of the courts.

### Election of Officers and Committee

The existing committee was re-elected on block.

Proposer Jill Dixon and seconded by Mary Turner

### Any Other Business

- This year, to take into account the successful grant application available to clubs affected by the pandemic, it was agreed that all membership fees collected would be made available as a fund to be used to allow members to join who were experiencing hardship. In addition, they would be used to for new equipment/assets to benefit members. Members will be given the opportunity to propose their ideas to the Committee for consideration. Members will vote for their preferred choice(s). It was noted that Chris Bones has forwarded an idea for a "half-court practise court" for such consideration.
- PH raised the issue that a new key is needed for the shed after an attempted break-in

LTC\_AGM 2021

- WH confirmed that Adult and Junior coaching programmes were now agreed with Ollie and Sam which the Secretary will promote to members

The meeting closed at 8.11.

APPENDICES (reports from the Chairman and Treasurer)

REPORT FROM THE CHAIR 2020

We open our meeting tonight by thanking Jill Dixon. Jill has sadly resigned from her position as Chair, due to personal reasons and we are very grateful for her leadership which has enabled the club to go from strength to strength including a nomination for Devon club of the year. We miss her both on the courts and in the committee room and look forward to welcoming her back in due course.

Yet again 2019 has been an exceptionally busy one for the club, and membership levels buoyant. The courts have stood up well despite the inclement weather and were professionally cleaned and treated before the start of the winter. Club member Chris Bones continued to remove leaves over the autumn period when he could and we are very grateful to him for taking on this task and helping to keep our courts in good condition for play.

Our League teams have had a particularly successful year, with the Ladies' B team, Men's Summer and Winter teams and the new Winter Mixed B team all winning promotion and bringing home the silverware for our cabinet. This is a great achievement for Lymptstone and no mean achievement for a club of our size. For the summer season, we will be entering 2 ladies' teams, 1 men's team and for the first time, 2 mixed teams. Captains for the season are Mixed A - Simon Findel-Hawkins, Mixed B Chris Bones, Men's Rob Hilton, Wendy Smith for the Ladies' A and Ladies' B Corinne Gimber and Liz Griffiths. We wish all our teams a very enjoyable and successful season. Of particular note is that Chris Bones, Captain of the new mixed team, will give priority to those who are not regular team players, and so widen opportunities for members to compete in League matches.

On that note we try hard to provide as many opportunities as possible to involve members in all forms of tennis exercise - triples, tournaments, coaching and cardio have all been well received. The

courts are very well used throughout the year for group activities and by our regular weekday players, who have missed very few sessions over the course of the year. Cardio tennis, introduced last year, now has quite a following, as does the adult coaching and it's great to have Ollie Sharpe so committed to our club. Our club ethos has always been to be as inclusive as possible and we are keen to welcome more members to our club sessions. There seems to be a slight perception that club nights are a big step up from adult coaching, but I hope everyone who comes along feels welcome and not intimidated. It's a great way to progress your game and put what you have learned from coaching into action.

Junior coaching was provided for the first time by Tom Kinch, a Level 2 coach from the LED, who has considerable experience of school tennis. Back in April, 32 young players signed up and Tom was delighted with the great play and developments over the 8-week programme. At the end, for the first time, the new Jackie Clarke Memorial Cup was awarded to the most improved player. Well done to Hollie Young.

We're delighted that Ollie and Tom will continue to run both Adult and Junior summer coaching programmes. Also remember that they may be contacted directly for private coaching on Sunday mornings.

We will be sending out a newsletter after this meeting, with all the information on forthcoming events so you can get involved and maybe try something new during the next 12 months. You can also find out more from our website which is updated regularly with news items and league fixtures and results, so please continue to use it to check up on how we are doing. Regular scheduled court bookings are also shown, although match dates will continue to be displayed on the new notice board, outside the court gate, and on the club calendar. We continue to send news via email to members; if you are not receiving newsletters from us in this way, please make sure we have your correct email address by having a word with Liz.

Last year 22 lucky members attended Wimbledon via the club ballot. Thank you to everyone who registered recently on-line and once we know our allocation of tickets for this year's tournament, we will provide details for the club 2020 ballot.

We want everyone to have a positive tennis experience at our club. As part of our Venue Registration requirements, the club now has a trained Welfare Officer, Corinne Gimber, a Diversity and Inclusion Policy and a Safeguarding Policy. Corinne's can be contacted for any Safeguarding concerns and copies of both policies are displayed on the club indoor notice board and on the website for members to access. In the summer, the club was audited by the LTA and we should all be proud that LTC is one of only a handful of clubs in the area to have exceeded the standard set.

Renewals are due on 1 April and members will be sent a reminder shortly. This is an opportune time to thank Andrew Lorenc who has held the post of Treasurer for more years than he cares to remember. This is a key role and during his time, the club funds have always been in very safe hands. Andrew now wishes to step back but will ensure a planned handover to his successor. So please pay promptly during this transition!

Benchmarked against other local clubs, our membership rates are excellent value and we strive to manage our facilities in a way that pleases most members and allows more people to play more tennis. I hope and believe we are doing a pretty good job, but this meeting is the perfect opportunity for a discussion forum about anything members want to raise.

During the past 9 months the VHMC have been working towards changing the current unincorporated old charity to a modern Charitable Incorporated Charity. After some wrangling with the Parish Council it has now been agreed that this project will go ahead. This new modern charity is much more flexible and will allow the

VHMC to enter legally binding contracts in the charity's name. Many other local village halls have already done this or are considering it now.

To enable this project the CIO must have several trustees, who will have a liability of £1.00 (recent change). As you all aware I am the trustee for the tennis club. Our club has a 20-year lease with 6 years to run. We have a choice; either run the 6 years as is, and then have a new lease, or take a new lease once the CIO is all agreed. I am not allowed to express my opinion. My signature is on the current lease signed in 2000 with Judy Fisher and Suki.

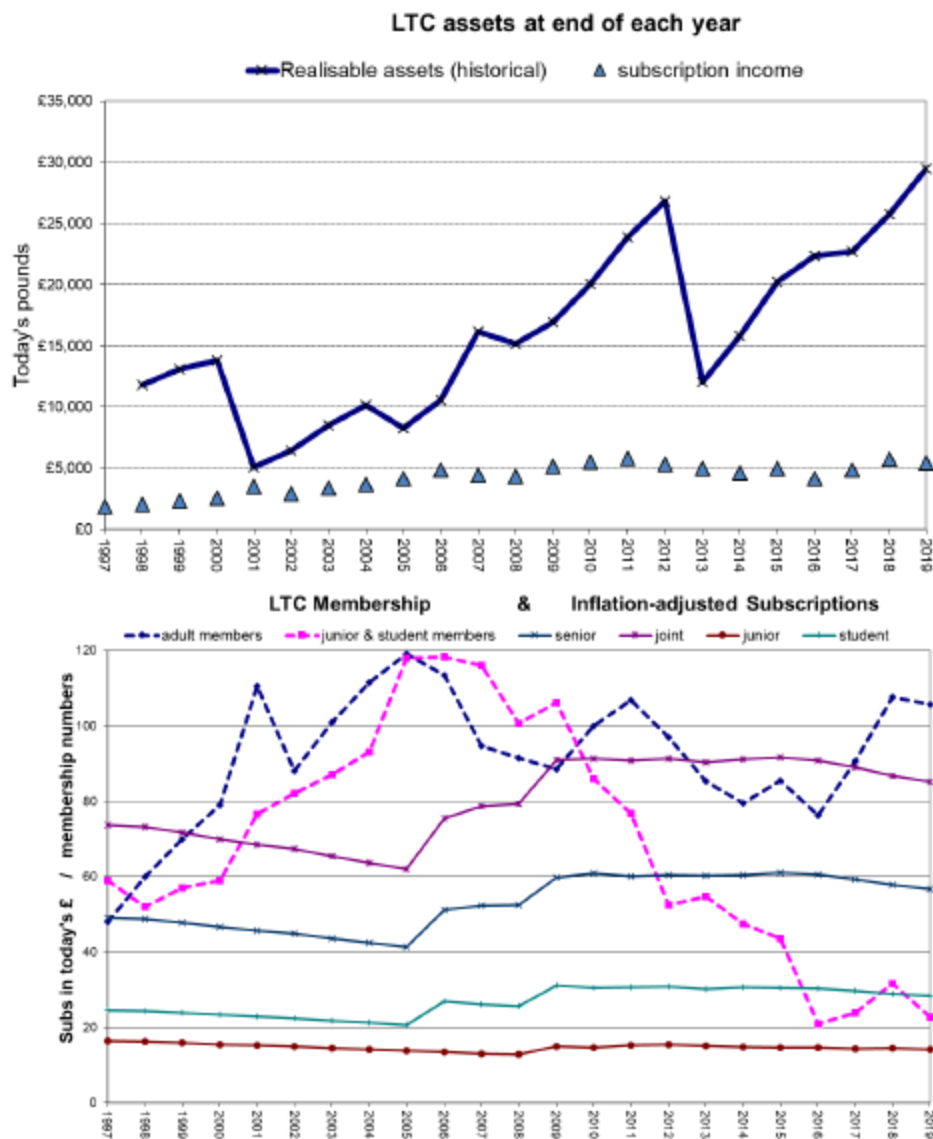
The VHMC are looking at levelling the ground from Candy's Field to the car park. It is a major task, and under Health and safety regulations the current access is positively dangerous. Plans have been drawn, and I think there will be some head way in the summer.

The court lights .....

Finally, the committee, as always, has been working very hard over the past year, to keep the club running smoothly. We are very sorry to lose both Jill and Andrew but look forward to appointing new members to the committee who can continue their legacy. The committee for the past year, all of whom are willing to continue, are myself, Corinne Gimber, Jenni Gates, Sarah Forde, Sue Norman and the current officer, Liz Griffiths. We will vote on their appointments later in the meeting. If anyone feels they would like to join the committee, we always welcome new ideas.

We are also incredibly lucky to have a group of people who are willing to help out with extra duties, such as helping to run events, a little bit of maintenance here and there, keeping the tea cupboard stocked up and more, so thank you to all of you.

# REPORT FROM THE TREASURER CHAIR 2020



## LTC Treasurer's Report 2019

- Membership numbers were down slightly on last year but within the noise. The juniors numbers shown do not include 25 *Minis*, who pay £0 subscription.
- There is no urgent need for an increase, so I propose the subscriptions remain unaltered:
 

	Senior	Joint	Junior	Student
2019 subs	£56	£84	£14	£28
2020 proposed	£56	£84	£14	£28
- I am looking for somebody to take over as treasurer. (I will help during transition.)

2020-02-14  
 Andrew Lorenc  
 Hon Treasurer LTC

	Year ending		31/12/19		Year ending		31/12/18	
<b>Income</b>			<b>Current</b>					
Subscriptions	Nos	Rate	Value		Nos	Rate	Value	
Senior	50.0	£56	£ 2,798.00		50.9	£56	£ 2,851.00	
Joint	27.8	£84	£ 2,331.00		28.3	£84	£ 2,380.00	
Junior	21.7	£14	£ 304.00		28.9	£14	£ 405.00	
Student	1.0	£28	£ 28.00		2.7	£28	£ 76.00	
<b>Total individual members</b>	<b>128.2</b>				<b>139.2</b>			
<b>Other</b>								
MINUS waived fees - paid by LTC funds			<b>-£140.00</b>				£0.00	
Sundry incl light tokens			£ 26.00				£ -	
Organised fund-raising events			£ 1,036.95				£ -	
Sen. Coach & Jun. Coach			£ 1,836.00				£ 1,831.00	
visitor, tour & match fees			£ 432.00				£ 249.00	
Tennis Balls			£ -				£ -	
Interest			£ 128.53				£ 83.12	
Keys			£ 40.00				£ 90.00	
Clothing etc.			£ -				£ 28.50	
<b>Total Income</b>			<b>£ 3,359.48</b>				<b>£ 2,281.62</b>	
			<b>£ 8,820.48</b>				<b>£ 7,993.62</b>	
<b>Expenditure</b>			<b>Current</b>				<b>Current</b>	
Annual rent			£ 980.00				£ 980.00	
Electricity			£ 290.28				£ 324.72	
Balls			£ 552.72				£ 214.98	
LTA Subs			£ 220.00				£ 220.00	
Sen. Coach & Jun. Coach			£ 1,653.00				£ 1,370.98	
tournaments & leagues			£ 43.00				£ 32.00	
Organised fund-raising events			£ 315.33				£ -	
Social, Open Day, etc.			£ 33.46				£ 117.31	
web site, Admin & AGM			£ 117.99				£ 78.10	
Equipment & maintenance			£ 1,084.54				£ 1,478.51	
Keys			£ -				£ 70.50	
Clothing etc.			£ -				£ -	
<b>Total Expenditure</b>			<b>£ 5,290.32</b>				<b>£ 4,887.10</b>	
<b>Operating Balance</b>			<b>£ 3,530.16</b>				<b>£ 3,106.52</b>	
<b>Balances Brought forward</b>			<b>£ 25,803.94</b>				<b>£ 22,697.42</b>	
<b>Total</b>			<b>£ 29,334.10</b>				<b>£ 25,803.94</b>	
<b>Assets (Realisable)</b>								
Santander Bank Acct.			£ 11,498.75				£ 8,056.31	
National Savings			£ 17,851.45				£ 17,722.92	
Building Society			£ -				£ -	
Petty Cash			<b>-£16.10</b>				£ 24.71	
Cheques not paid in yet			£ -				£ -	
<b>Total</b>			<b>£ 29,334.10</b>				<b>£ 25,803.94</b>	
Shed, Ball machine etc.			£ 82.36				£ 91.51	
Depreciation at 10%			<b>-£8.24</b>				<b>-£9.15</b>	
<b>Total Assets</b>			<b>£ 29,408.22</b>				<b>£ 25,886.30</b>	

Accounts have been audited by Karen Gratton